



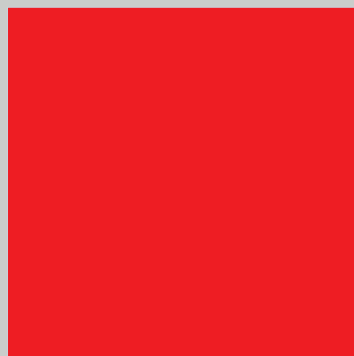
National **MCH** Workforce
Development Center

Advancing Health Reform Implementation

January 2015



THE AFFORDABLE CARE ACT: A WORKING GUIDE FOR MCH PROFESSIONALS





Access to Care



About the National MCH Workforce Development Center and Access to Care Core

The National MCH Workforce Development Center, in cooperation with the Maternal and Child Health Bureau, and in partnership with the Association of Maternal & Child Health Programs and national experts in maternal and child health innovation, offers state and territorial Title V leaders training, collaborative learning, coaching and consultation in implementing health reform using a variety of learning platforms.

Staff from the Association of Maternal & Child Health Programs (AMCHP, <http://www.amchp.org>) the Catalyst Center (<http://www.catalystctr.org>) and the National Academy for State Health Policy (NASHP, <http://www.nashp.org>) comprise the Access to Care Core of the National MCH Workforce Development Center. The Access to Care Core provides training support and helps foster partnerships between state MCH programs and Medicaid and CHIP programs, insurance agencies, and Marketplaces to improve access for MCH populations.

Authors

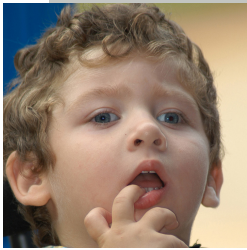
Atyya Chaudhry (AMCHP), Meg Comeau (Catalyst Center), Beth Dworetzky (Catalyst Center), Catherine Hess (NASHP), Keerti Kanchinadam (NASHP), Carolyn McCoy (AMCHP), Karen VanLandeghem (AMCHP/NASHP), and Kathy Witgert (NASHP)

Acknowledgments

Many thanks to Michele Lynn of Michele Lynn Communications for her edits and guidance and to Amy Mullenix, Senior Collaboration Manager for the Center, for her input. Thanks also to Edi Ablavsky, Catalyst Center Communications Specialist, who transformed a collection of complex parts into a coherent and friendly whole.

Finally, the Access to Care Core extends its appreciation to Michelle Tissue, MPH, HRSA project officer, for her ongoing support of this project.

The National MCH Workforce Development Center is supported by the Health Resources and Services Administration (HRSA) of the U.S. Department of Health and Human Services (HHS) under grant number UE7MC26282 for \$1,837,391 with no financial support from nongovernmental sources. This information and conclusions are those of the authors and should not be construed as the official position or policy of, nor should any endorsements be inferred by HRSA, HHS or the U.S. Government.



INTRODUCTION TO THIS GUIDE

The Affordable Care Act (ACA) was signed into law on March 23, 2010. Since then, key features of the national health care reform law have been implemented over time. In January 2014, major expansions of public and private health insurance went into effect. Moving forward, additional provisions will be phased in and other provisions, such as the Essential Health Benefits, will be revisited.

In keeping with the purpose of the National MCH Workforce Development Center to support workforce development for State Title V program leaders, staff, and future maternal and child health (MCH) professionals, the Access to Care Core has prepared this guide, which consists of the six modules listed on the right side of this page.

The first three modules provide an overview of the ACA and its implications; the final three modules address new and expanded ways individuals can access health care coverage and provide an explanation of the covered services.

Because each state and territory had some choice in how to implement the ACA, there is state-to-state variability in how the law affects MCH populations. These modules provide the building blocks for current and future MCH professionals to learn the basics of the law. Each module includes a Test Your Knowledge quiz to help clarify what has been learned, a Find Out in Your State section with questions to delve deeper into the specifics for your state or territory, and resources for further exploration.

With this knowledge, the National MCH Workforce Development Center hopes to enhance the capacity of the MCH workforce to:

- Foster partnerships between state MCH programs and Medicaid, Children's Health Insurance Program (CHIP), insurance agencies, and Marketplaces to improve access to care for MCH populations
- Lead and/or engage in ongoing ACA implementation and public health transformation
- Help women, children and youth, including children and youth with special health care needs, and their families navigate the health system in an era of national health reform

What's Inside

This guide consists of six modules that provide:

- An introduction to the national health care reform law (page 7)
- A glossary of terms related to health care financing and new terms which are specific to the ACA (page 13)
- An explanation of the new consumer protections (page 19)
- Pathways to coverage (page 23)
- The Marketplace (page 29), and
- Benefits (page 35)

This document is part of *The Affordable Care Act: A Working Guide for MCH Professionals*, available in its entirety on the Web at <http://www.amchp.org/Transformation-Station/Pages/ACA-101.aspx>

The National MCH Workforce Development Center is supported by the Health Resources and Services Administration (HRSA) of the U.S. Department of Health and Human Services (HHS) under grant number UE7MC26282 for \$1,837,391 with no financial support from nongovernmental sources. This information and conclusions are those of the authors and should not be construed as the official position or policy of, nor should any endorsements be inferred by HRSA, HHS or the U.S. Government.